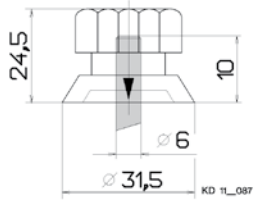
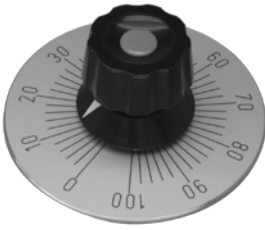


# Accessories

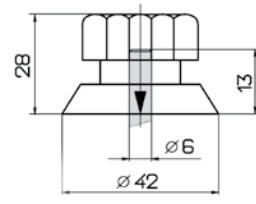
## Knobs and Scales

- 1
- 2
- 3
- 4
- 5
- 6
- 7
- 8
- 9

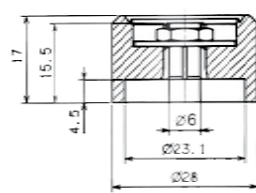
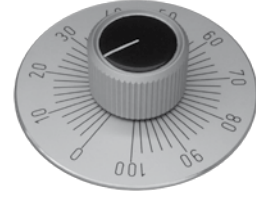
**Rotary knob Ø 31,5**  
thermosetting plastic  
Order no. 19020



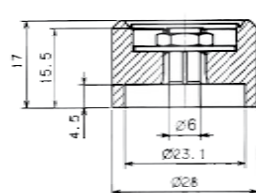
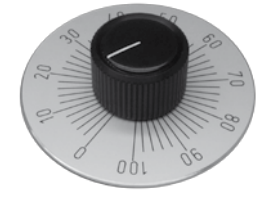
**Rotary knob Ø 42**  
thermosetting plastic  
Order no. 19022



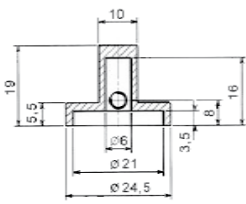
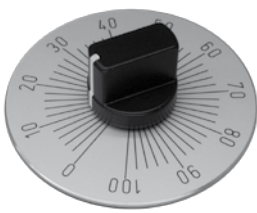
**Alu rotary knob Ø 28,0**  
alu-coloured anodized  
Order no. 19043



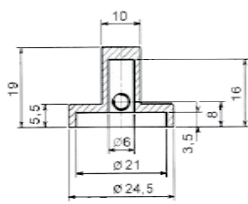
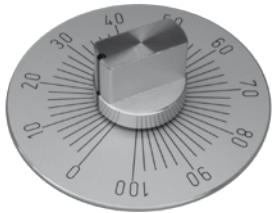
**Alu rotary knob Ø 28,0**  
black anodized  
Order no. 19042



**Alu toggle knob Ø 24,5**  
black powder coated  
Order no. 19044



**Alu toggle knob Ø 24,5**  
protection painted  
Order no. 19045

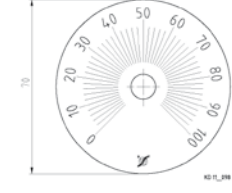


**Scale 330° 0-100 Ø 70**  
base silver, text black  
Order no. 19015



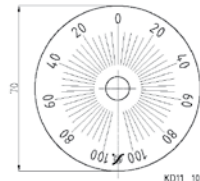
KD\_TL\_098

**Scale 270° 0-100 Ø 70**  
base silver, text black  
Order no. 19013



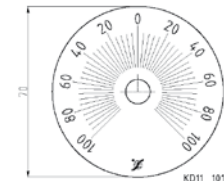
KD\_TL\_098

**Scale 2x165° 100-0-100 Ø 70**  
base silver, text black  
Order no. 19036



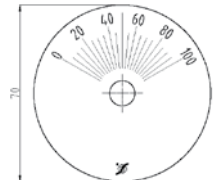
KD11\_101

**Scale 2x135° 100-0-100 Ø 70**  
base silver, text black  
Order no. 19035

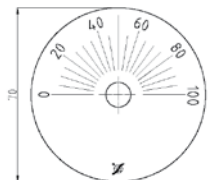


KD11\_101

**Scale 120° 0-100 Ø 70**  
base silver, text black  
Order no. 19031



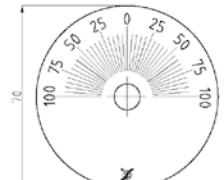
**Scale 180° 0-100 Ø 70**  
base silver, text black  
Order no. 19032



**Scale 2x60° 100-0-100 Ø 70**  
base silver, text black  
Order no. 19033



**Scale 2x90° 100-0-100 Ø 70**  
base silver, text black  
Order no. 19034



KD11\_101

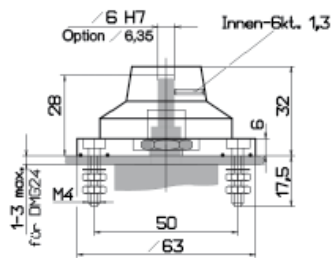
## Accessories

### Knobs and further potentiometer versions

Profi-Adapter

Datasheet: KE2408

**Profi Adapter**



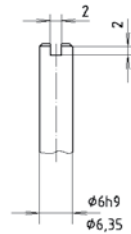
Analog control knob and adapter plate for easy and reliable mounting to your panel.

Suitable for:  
DMG18, 19, 22, 23, 24, DP18, DP113

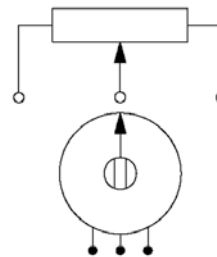
Order no.:  
24799 Shaft diameter d=6,0 mm  
24800 Shaft diameter d=6,35 mm

Shaft with slit

Datasheet: KE9901



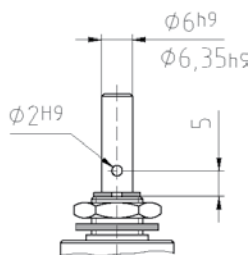
position of slit  
to slider tap



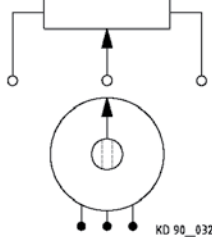
Order no.:  
70408 Shaft design with slit

Shaft with side-drilled hole

Datasheet: KE9901



position of D-profile  
to slider tap

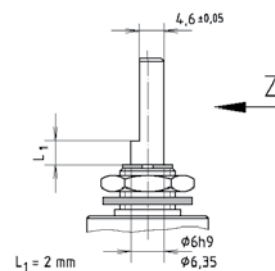


KD 90\_032

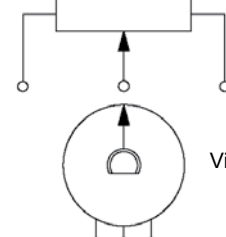
Order no.:  
70407 Shaft with side-drilled hole

Shaft with D-profile

Datasheet: KE9901



position of D-profile  
to slider tap



View Z

KD 90\_030

Order no.:  
70409 Shaft design with D-profile

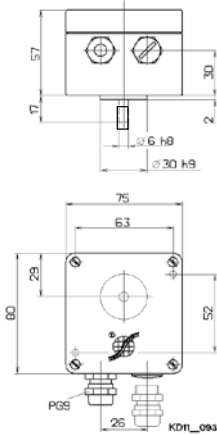
# Accessories

## Protective Housings, Couplings, Limit Switches

1

### Protective Housing

Order No. see below



Lacquered aluminium protective housing for potentiometers

The protective housing has the protection class IP65 and comes assembled with the potentiometer. Optionally it can be equipped with a second PG9 access.

Protective housing for potentiometer:

Type DP18      Order no. 21189  
Type DP113      Order no. 11512

2

3

### Protective Housing

Order No. see below



Lacquered aluminium protective housing for potentiometers

The protective housing has the protection class IP65 and comes assembled with the potentiometer. Optionally it can be equipped with a second PG9 access. The internal terminal block (order no. 11518) is a further option in the delivery scope.

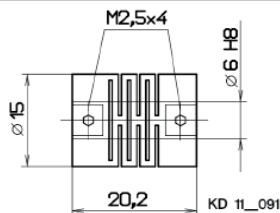
Protective housing for potentiometer:

Order no. 11510  
for type DP113 and type DP120

4

### Bellows Coupling

Order No. see below



Material: Plastic

For shaft diameter:

D=6 mm      Order no. 19012

5

### Slip Coupling

Order No. see below



The torque is variably adjustable by the screws.

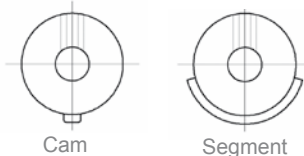
Material: metal

6

### Cam and Segment Disc

Order No. see below

Switching functions:



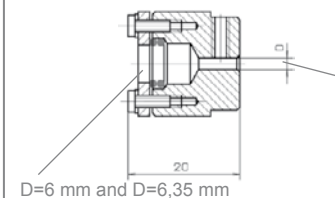
Cam      Order no. 21188

60°      Order no. 21184

120°      Order no. 21185

180°      Order no. 21186

7



For shaft diameter:

D=6<sup>H8</sup> mm      Order no. 19053

D=4<sup>H8</sup> mm      Order no. 19052

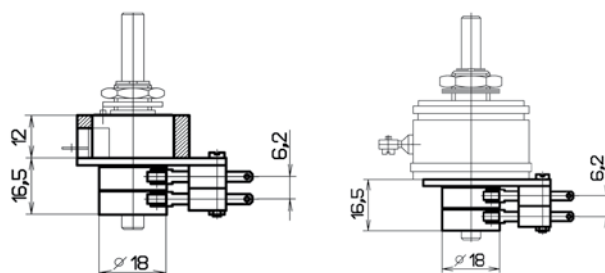
D=3<sup>H8</sup> mm      Order no. 19054

D=6 mm and D=6,35 mm

8

### Limit Switch

Order No. see below



Type DP18

Type DP113

The limit switch of subminiature size has a toggle-spring mechanism with a corrosion resistant helical tension spring. The actuation is effected by a roller lever with low actuation force. Two switch types are available for low-voltage current (gold contacts) and for output power applications (silver contacts).

External limit switch:

Order no.	Quantity	Version
21190	1x	Gold contacts (switching power 0,1A)
21191	2x	Gold contacts (switching power 0,1A)
21192	1x	Silver contacts (switching power 6 A)
21193	2x	Silver contacts (switching power 6 A)

Internal limit switch (not possible for DP18):

11650	1x	Gold contacts (switching power 0,1A)
11651	2x	Gold contacts (switching power 0,1A)

9

# Accessories

## Connection and Mounting Elements

**Terminal block** **Order no. 11518**

Terminal block for protective housing with potentiometer type DP18, DP113 and DP120.

For type: F25  
For mounting hole  
D=2,1      Order no. 01838  
D=3,1      Order no. 01840

**Clamping claw** **Order no. 11420**

For fixing of the potentiometers by synchro flange.

For the types:  
DP18, DP113, DP120,  
GP40, MP40, DMG, DL/LL32

**Mounting plate** **Order no. 33535**

For fixing of linear potentiometers by mounting plate.

For type: DL/LL32

**Clamping claw** **Order No. see below**

For fixing of the potentiometers by synchro flange.

For type: F25  
For mounting hole  
D=2,1      Order no. 01838  
D=3,1      Order no. 01840

**Multiadapter** **Order No. see below**

For fixing of the potentiometers on a mounting angle (35mm).

For the types:  
GP40, MP40  
L=90 mm      Order no. 11537  
L=120 mm      Order no. 11539

**Mounting plate** **Order no. 11536**

For easy fixing of potentiometers type DP113 Sy.

2 pieces of clamping claws (# 11420) are included in the delivery scope.

**Mounting angle** **Order no. 15095**

For mounting of potentiometers with central fixing.

For model types:  
DP18, DP113, DP120, GP-DMG,  
MP40, DMG with thread mounting  
M10 or M12.

**Potentiometer flange** **Order No. see below**

Potentiometer flange for adaptation of the potentiometer to D=30mm location hole.

Flange for potentiometer types:  
DP113      Order no. 11502  
DP120      Order no. 11500

- 1
- 2
- 3
- 4
- 5
- 6
- 7
- 8
- 9