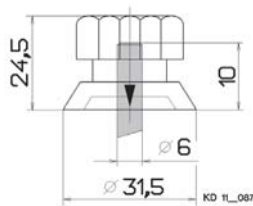


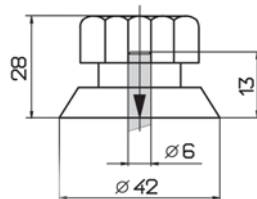
Potentiometer Accessories

Knobs + Scales

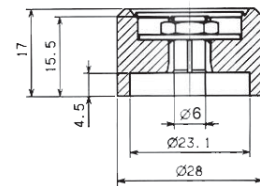
Turning Knob \varnothing 31,5
Duroplast
Code: 19020



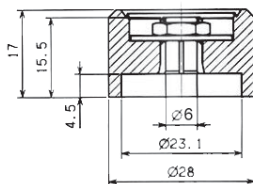
Turning Knob \varnothing 42
Duroplast
Code: 19022



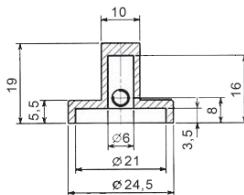
Aluminium Turning Knob \varnothing 28,0
alu-colour anodized
Code: 19043



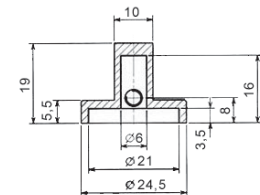
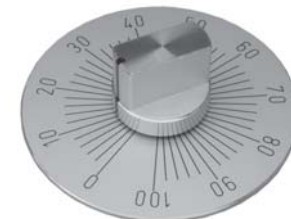
Aluminium Turning Knob \varnothing 28,0
black anodized
Code: 19042



Aluminium Toggle Knob \varnothing 24,5
black, powder coated
Code: 19044



Aluminium Toggle Knob \varnothing 24,5
protection painted
Code: 19045



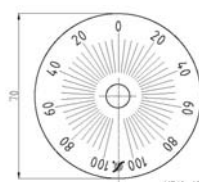
Scale 330° 0-100 \varnothing 70
base silver, text black
Code: 19015



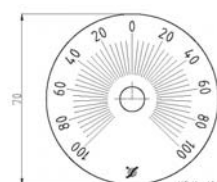
Scale 270° 0-100 \varnothing 70
base silver, text black
Code: 19013



Scale 2x165° 100-0-100 \varnothing 70
base silver, text black
Code: 19036



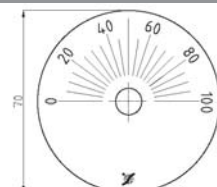
Scale 2x135° 100-0-100 \varnothing 70
base silver, text black
Code: 19035



Scale 120° 0-100 \varnothing 70
base silver, text black
Code: 19031



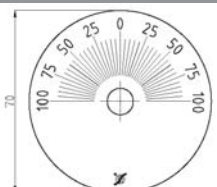
Scale 180° 0-100 \varnothing 70
base silver, text black
Code: 19032



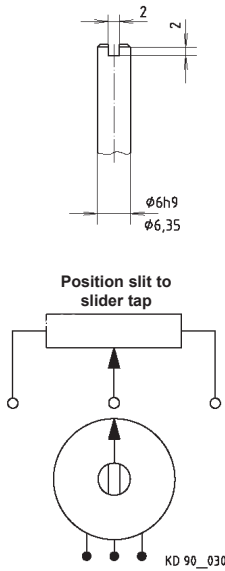
Scale 2x60° 100-0-100 \varnothing 70
base silver, text black
Code: 19033



Scale 2x90° 100-0-100 \varnothing 70
base silver, text black
Code: 19034

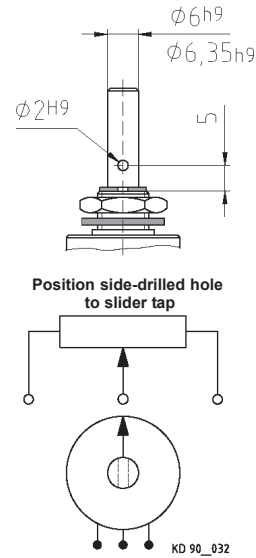


Shaft with slit Sheet: KD9901



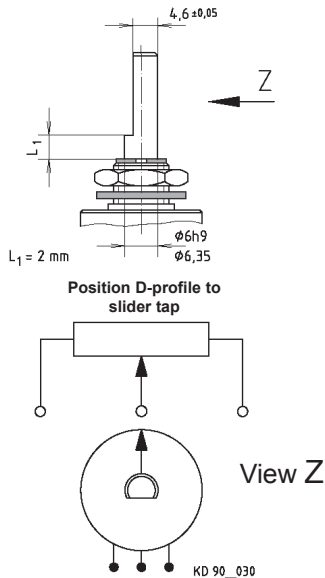
Code:
 21320 Shaft DP18 with slit
 11626 Shaft DP113/120 with slit
 24824 Shaft DMG with slit

Shaft with side-drilled hole Sheet: KD9901



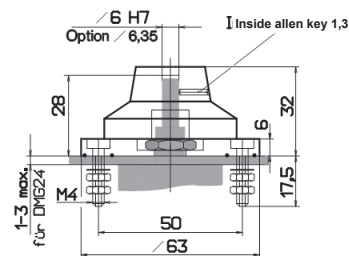
Code:
 21316 Shaft DP18 with side-drilled hole
 11618 Shaft DP113/120 with side-drilled hole
 24825 Shaft DMG with side-drilled hole

Shaft with D-profile Sheet: KD9901



Code:
 21324 Shaft DP18 D-profile
 11622 Shaft DP113/120 D-profile
 24823 Shaft DMG D-profile

Profi-Adapter Sheet: KD2408



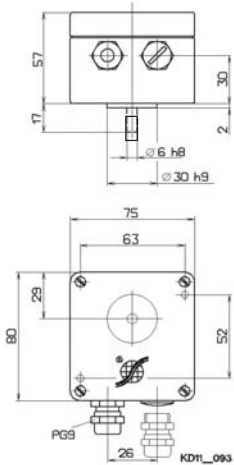
Analogue control knob + adapter plate for easy and reliable mounting to your panel.

Suitable for:
 DMG18, 19, 22, 23, 24, DP18, DP113

Code:
 24799 Shaft $d=6,0\text{ mm}$
 24800 Shaft $d=6,35\text{ mm}$

Protective Housing *Code: see below*

Painted Aluminium protective housing for Potentiometers



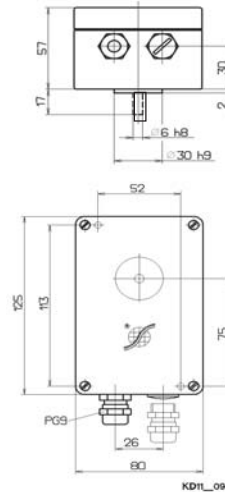
The protective housing is delivered completely with the Potentiometer and has the protection class IP65. Optionally it can be delivered with a second PG9 access.

For Potentiometer types:

Type DP18 Code: 21189
Type DP113 Code: 11512

Protective Housing *Code: see below*

Painted Aluminium protective housing for Potentiometers



The protective housing is delivered completely with the Potentiometer and has the protection class IP65. Optionally it can be delivered with a second PG9 access.

A further delivery option is the internal terminal block, Code: 11518

For Potentiometer types:

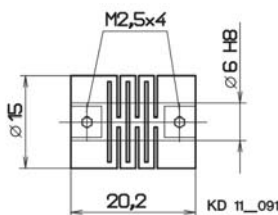
Type DP113 and Type DP120
Code: 11510

Bellows Coupling *Code: see below*

Material: Plastic

For shaft diameters:

D=6 mm Code: 19012
D=4 mm Code: 19010



Slide Coupling *Code: see below*

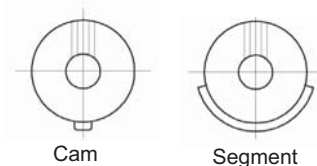
Torque is individually adjustable by the screws.

Material: Metal



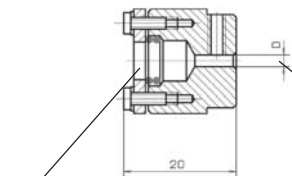
Cam and Segment Disk *Code: see below*

Switch functions:



Cam Code 21188

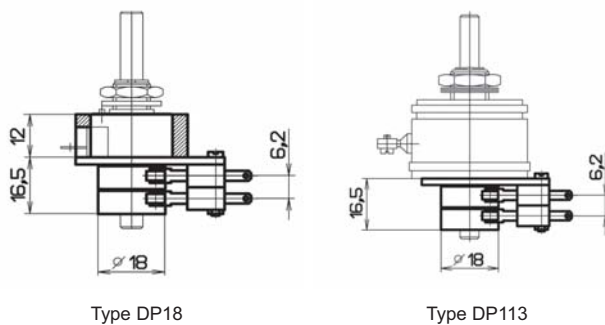
60° Code 21184
120° Code 21185
180° Code 21186



For Shaft diameters:

D=6^{H8} mm Orderno. 19053
D=4^{H8} mm Orderno. 19052
D=3^{H8} mm Orderno. 19054

Limit Switch *Code: see below*



The limit switch in submidjet size has a toggle-spring mechanism with a corrosion resistant helical tension spring. The actuation is effected by a roller lever with low actuation force. Two switch types are available for low-voltage current and for output power applications (silver contact).

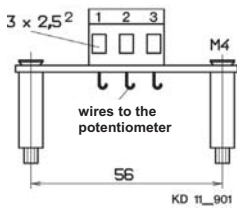
External limit switch:

Code	Number	Version
21190	1x	Gold contacts (switching power 0,1A)
21191	2x	Gold contacts (switching power 0,1A)
21192	1x	Silver contacts (switching power 6A)
21193	2x	Silver contacts (switching power 6A)

Internal limit switch (not possible for DP18):

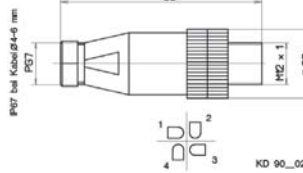
11650	1x	Gold contacts (switching power 0,1A)
11651	2x	Gold contacts (switching power 0,1A)

Terminal block Code: 11518



Terminal block for protective housing with Potentiometer type DP18, DP113 and DP120

Sensor Plug Connection Code: see table

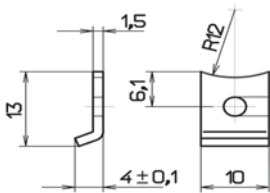


For optional delivery with Linear Potentiometers

For Type DL30

Mounting only possible in our factory.

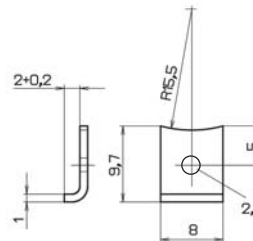
Clamping claw Code: 11420



For installation of Potentiometers by synchro flange

For Potentiometer types:
DP09, DP18, DP113, DP120,
GP40, MP40, DMG, DL30

Clamping claw Code: see table

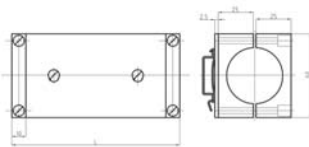


For installation of Potentiometers by synchro flange

For Type: F25

For mounting hole
D=2,1 Code 01838
D=3,1 Code 01840

Mounting element Code: see table

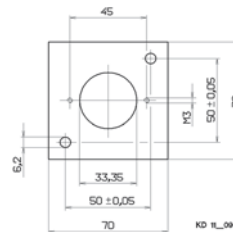


For mounting on top-hat rail (35mm)

For Potentiometer types:
GP40, MP40

L= 90 mm Code 11537
L=120 mm Code 11539

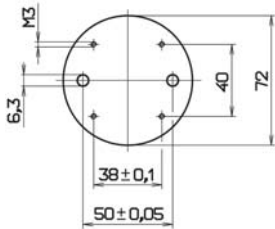
Mounting plate Code: 11536



For easy mounting of potentiometer type DP113 Sy

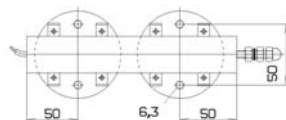
2 pieces of clamping claws (Code 11420) are included in the delivery

Mounting plate Code: 33535



For installation of Linear Potentiometers by mounting plate

For Type: DL30



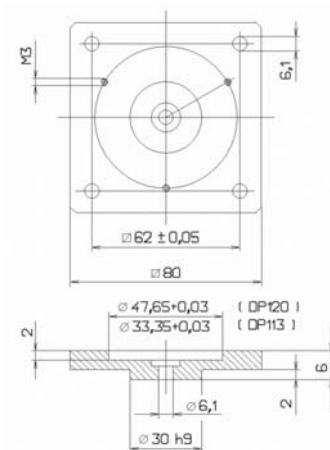
Mounting angle Code: 15095



For mounting of potentiometers with central fixing

For Potentiometer types:
DP18, DP113, DP120,
GP-DMG, MP30, DMG
with thread mounting
M10 or M12

Potentiometer Flange Code: see table



Potentiometer Flange for adaptation of the Potentiometer on D=30mm location hole

Flange for potentiometer types:
Type DP113 Code 11502
Type DP120 Code 11500